

SolarInvert Energy Solutions

What does a flow battery consist of



Overview

A flow battery is a rechargeable in which an containing one or more dissolved electroactive elements flows through an that reversibly converts to . Electroactive elements are "elements in solution that can take part in an electrode reaction or that can be on the electrode." Electrolyte is stored externally, generally in tanks, and is typically pumped through the cell (or c.

What does a flow battery consist of



What In The World Are Flow Batteries?

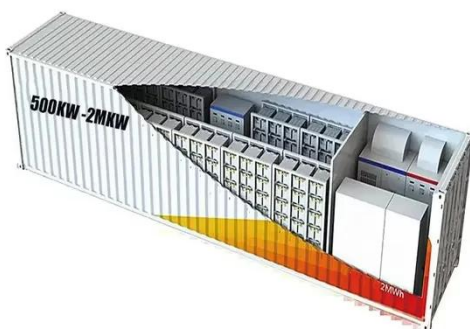
Flow battery technology is noteworthy for its unique design. Instead of a single encased battery cell where electrolyte mixes readily with conductors, the fluid is separated into two tanks and ...

[Get Price](#)

Flow battery

A flow battery is a rechargeable fuel cell in which an electrolyte containing one or more dissolved electroactive elements flows through an electrochemical cell that reversibly converts chemical ...

[Get Price](#)



What Are Battery Cells? Definition, Types, and Their Role in ...

Battery cells are electrochemical systems that change chemical energy into electric power. Each cell has an anode (negative side) and a cathode (positive side), with an ...

[Get Price](#)

What does high voltage energy storage battery include?

Different battery types may employ varying materials and configurations for these components, affecting the battery's overall ...

[Get Price](#)



Flow battery

OverviewDesignHistoryEvaluationTraditi
onal flow batteriesHybridOrganicOther
types

A flow battery is a rechargeable fuel cell in which an electrolyte containing one or more dissolved electroactive elements flows through an electrochemical cell that reversibly converts chemical energy to electrical energy. Electroactive elements are "elements in solution that can take part in an electrode reaction or that can be adsorbed on the electrode." Electrolyte is stored externally, generally in tanks, and is typically pumped through the cell (or c...

[Get Price](#)

What Is a Battery and How Does It Work?

The battery's electrodes consist of materials that can undergo redox reactions, while the electrolyte serves as a medium for ion transfer. When a battery is connected to a ...

[Get Price](#)


Flow Battery

The flow battery is a form of battery in which electrolyte containing one or more dissolved electroactive species flows through a power cell/reactor in which chemical energy is converted ...

[Get Price](#)


What is a Flow Battery? A Comprehensive ...

A flow battery is a type of rechargeable battery that stores electrical energy in two electrolyte liquids in a separate tank. The liquid ...

[Get Price](#)


The Beginner's Guide to How a Battery Works

Jose Luis Pelaez/ Getty Images A battery, which is actually an electric cell, is a device that produces electricity from a chemical reaction. ...

[Get Price](#)


What is a Flow Battery: A Comprehensive Guide to

Flow batteries have two main categories: Redox flow batteries utilize redox reactions of the electrolyte solutions for energy storage. The ...

[Get Price](#)


Flow Batteries: Definition, Pros + Cons, Market Analysis & Outlook

A flow battery's cell stack (CS) consists of electrodes and a membrane. It is where electrochemical reactions occur between two electrolytes, converting chemical energy into ...

[Get Price](#)

What you need to know about flow batteries

Flow batteries have a chemical battery foundation. In most flow batteries we find two liquified electrolytes (solutions) which flow and cycle through the area

where the energy conversion ...

[Get Price](#)



What you need to know about flow batteries

What is unique about a flow battery? Flow batteries have a chemical battery foundation. In most flow batteries we find two liquified electrolytes (solutions)

...

[Get Price](#)

How a battery works

A battery is a device that stores chemical energy and converts it to electrical energy. The chemical reactions in a battery involve the flow of ...

[Get Price](#)



What Are Flow Batteries? A Beginner's Overview

A flow battery is a type of rechargeable battery that stores energy in liquid electrolytes, distinguishing itself from conventional batteries, which store

energy in solid ...

[Get Price](#)



How Does a Battery Work? Everything You Need to ...

They consist of multiple galvanic cells, each with a specific function. Each cell contains two electrodes: an anode and a cathode made from ...

[Get Price](#)



Flow Batteries: Definition, Pros + Cons, Market ...

A flow battery's cell stack (CS) consists of electrodes and a membrane. It is where electrochemical reactions occur between two ...

[Get Price](#)

Flow Battery Basics: How Does A Flow Battery Work In Energy ...

A flow battery works by pumping positive and negative electrolytes through separate loops to porous electrodes, which a membrane

separates. During discharge,

[Get Price](#)

12.8V 100Ah



How a Flow Battery Works

Unlike conventional batteries, which store energy in solid electrodes, flow batteries rely on chemical reactions occurring between the liquids stored in external tanks and circulated ...

[Get Price](#)

Galvanic Cells

A battery is a package of one or more galvanic cells used for the production and storage of electric energy by chemical means. A galvanic cell consists of at ...

[Get Price](#)



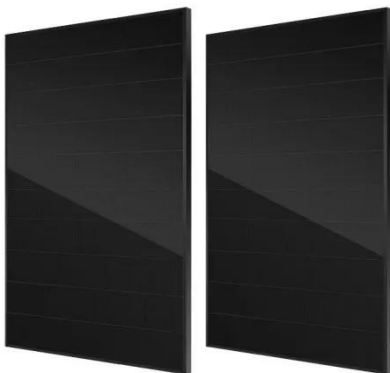
Understanding EV battery structure: What it consists of

Discover the secrets of EV battery structure! Uncover what powers electric cars, from cells to packs, and how they boost performance & range.

[Get Price](#)

What Is A Flow Battery? Overview Of Its Role In Grid-Scale ...

A flow battery works by storing energy in liquid electrolytes, which circulate through the system. The main components of a flow battery are two tanks for the electrolytes, ...

[Get Price](#)

What are the key components of a high voltage battery?

A high voltage battery consists of several key components that work together to provide power and energy storage. One of the most important components is the cathode, which is ...

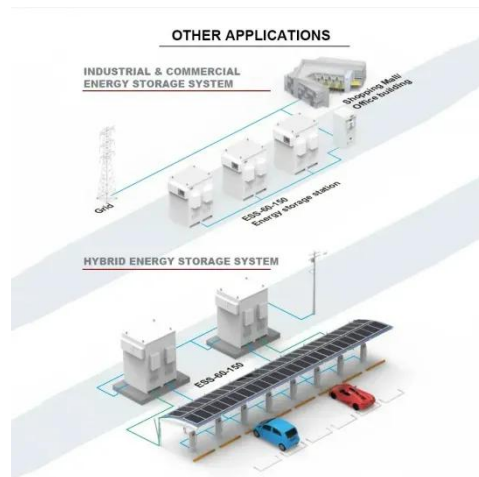
[Get Price](#)

What is a Flow Battery? A Comprehensive Introduction to Liquid ...

A flow battery is a type of rechargeable battery that stores electrical energy in two electrolyte liquids in a separate

tank. The liquid contained in the flow battery contains active ...

[Get Price](#)



How Do Battery Plates Work? Here Is the Process!

The battery plate is made up of two metal plates, one positive and one negative. The anode is where oxidation occurs and the electrons flow out ...

[Get Price](#)

What you need to know about flow batteries

What is unique about a flow battery?
Flow batteries have a chemical battery foundation. In most flow batteries we find two liquified electrolytes (solutions) which flow and cycle through the ...

[Get Price](#)



What is a Flow Battery: A Comprehensive Guide to

Flow batteries have two main categories: Redox flow batteries utilize redox reactions of the electrolyte solutions for energy storage. The concentration of

active species ...

[Get Price](#)



What In The World Are Flow Batteries?

The flow battery is a form of battery in which electrolyte containing one or more dissolved electroactive species flows through a power cell/reactor in which chemical energy is converted ...

[Get Price](#)



Contact Us

For catalog requests, pricing, or partnerships, please visit:
<https://barkingbubbles.co.za>