

## SolarInvert Energy Solutions

# Base station energy communication principle



## Overview

---

Why are base stations important in cellular communication?

Base stations are important in the cellular communication as it facilitate seamless communication between mobile devices and the network communication. The demand for efficient data transmission are increased as we are advancing towards new technologies such as 5G and other data intensive applications.

What are the components of a base station?

**Power Supply:** The power source provides the electrical energy to base station elements. It often features auxiliary power supply mechanisms that guarantee operation in case of lost or interrupted electricity, during blackouts. **Baseband Processor:** The baseband processor is responsible for the processing of the digital signals.

What is the impact of base stations?

The impact of the Base Stations comes from the combination of the power consumption of the equipment itself (up to 1500 Watts for a nowadays macro base station) multiplied by the number of deployed sites in a commercial network (e.g. more than 12000 in UK for a single operator).

What are the properties of a base station?

Here are some essential properties: **Capacity:** Capacity of a base station is its capability to handle a given number of simultaneous connections or users. **Coverage Area:** The coverage area is a base station is that geographical area within which mobile devices can maintain a stable connection with the base station.

Why is a base station important?

In many cases the base station is most of the time only an intermediate component between the network and the handheld. However, in certain cases

the downloading operation itself may have an influence on the way the base station has to work and so the base station is an important actor.

How does a base station work?

It usually connects the device to other networks or devices through a dedicated high bandwidth wire or fiber optic connection. Base stations typically have a transceiver, capable of sending and receiving wireless signals; Otherwise if they only send the trailer it will be considered a transmitter or broadcast point only.

## Base station energy communication principle

---



### Principles of Retrofitting Wireless Base Station Towers

Retrofitting wireless base station towers is a strategic approach to modernize telecommunications infrastructure, guided by principles of structural integrity, compatibility, and efficiency.

[Get Price](#)

### Energy-Efficient Base Stations

The impact of the Base Stations comes from the combination of the power consumption of the equipment itself (up to 1500 Watts for a nowadays macro base station) ...

[Get Price](#)



### Energy Cooperation for Sustainable Base Station Deployments: Principles

In this paper, we consider cooperative downlink communication. The communication between base station and destination is assisted by multiple relays in the ...

[Get Price](#)



## Base Stations

**Backhaul Connection:** The backhaul connection links the base station to the core network in the mobile communication system. It provides for the interchange of data between ...

[Get Price](#)



### **Communication base station**

Communication base stations are one of the core nodes of modern communication networks and require uninterrupted power supply to maintain ...

[Get Price](#)

### **Energy Cooperation for Sustainable Base Station Deployments: ...**

In this paper, we consider cooperative downlink communication. The communication between base station and destination is assisted by multiple relays in the ...

[Get Price](#)



### **Energy-Efficient Base Stations**

Energy saving potential of integrated hardware and resource management solutions for wireless base stations," in 2011 IEEE 22nd International Symposium on Personal Indoor ...

[Get Price](#)

---

### **Standardizing a new paradigm in base station architecture**

The breakthrough in beamforming technology came around the turn of the last decade with the emergence of antenna-integrated base stations. At Ericsson, we realised ...

[Get Price](#)

### **Communication Base Station Energy Solutions**

Many remote areas lack access to traditional power grids, yet base stations require 24/7 uninterrupted power supply to maintain stable communication ...

[Get Price](#)

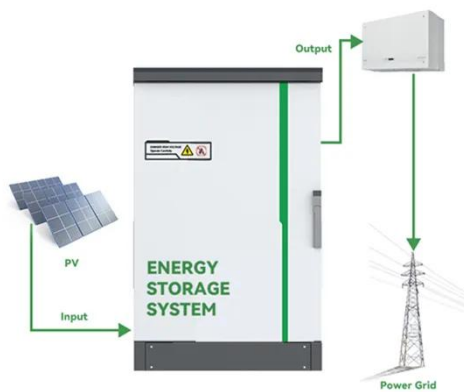
---

### **Base Station System Structure**

The intent of this section is to explore the role of base stations in communications systems, and to develop a reference model that can be used to describe and compare base

station software ...

[Get Price](#)



## Wireless Sensor Network (WSN)

Types of Wireless Sensor Networks (WSN) Terrestrial Wireless Sensor Networks Used for efficient communication between base stations.

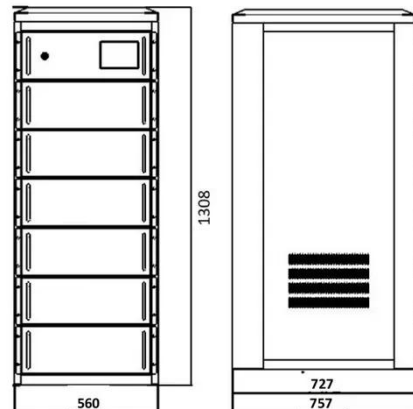
...

[Get Price](#)

## Basic Antenna Principles for Mobile Communications

Antennas for portable radio equipment are often exposed to ill-handling and sometimes even played with by the user. Base station antennas are exposed to high wind speed, vibrations, ...

[Get Price](#)



## Energy-Efficient Base Stations , part of Green Communications

In order to effectively improve the energy efficiency of the future mobile networks, it is thus important to focus the attention on the Base Station.

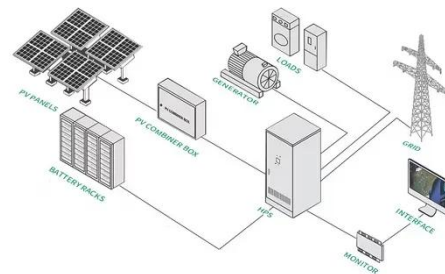
[Get Price](#)

Modular design,  
unlimited combinations in parallel  
**BUILT-IN DUAL FIRE PROTECTION MODULE**



## Reinforcement learning optimization for base station sleeping ...

In allusion to the energy efficiency optimization, base station sleeping strategy is proposed. The base station should be turned off when the traffic is low and the surrounding ...


[Get Price](#)


## Telecommunication base station system working principle and ...

The ESB-series outdoor base station system utilizes solar energy and diesel engines to achieve uninterrupted off grid power supply. Solar power generation is the use of photovoltaic panels to ...

[Get Price](#)

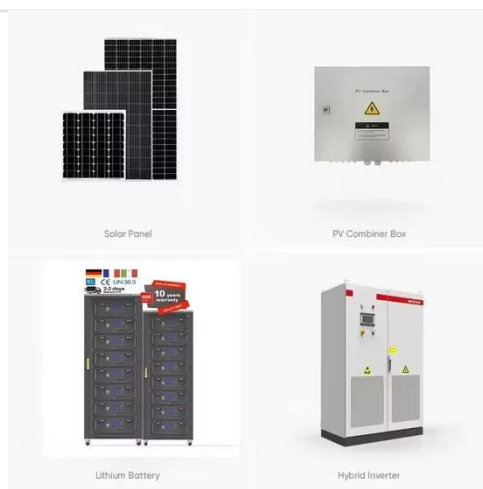
## Optimal energy-saving operation strategy of 5G base station with

To further explore the energy-saving potential of 5 G base stations, this paper proposes an energy-saving operation model for 5 G base stations that



incorporates communication caching ...

[Get Price](#)



## 5G and energy internet planning for power and communication ...

Our study introduces a communications and power coordination planning (CPCP) model that encompasses both distributed energy resources and base stations to improve ...

[Get Price](#)

## Communication base station

Communication base stations are one of the core nodes of modern communication networks and require uninterrupted power supply to maintain signal coverage and data transmission.

[Get Price](#)



## Base Stations

**Backhaul Connection:** The backhaul connection links the base station to the core network in the mobile communication system. It provides for ...

[Get Price](#)



## Communication Base Station Energy Solutions

Many remote areas lack access to traditional power grids, yet base stations require 24/7 uninterrupted power supply to maintain stable communication services.

[Get Price](#)



## Base Station System Structure

2 Base Station Background The intent of this section is to explore the role of base stations in communications systems, and to develop a reference model that can be used to describe and ...

[Get Price](#)

## Energy-Efficient Base Stations , part of Green Communications

With the explosion of mobile Internet applications and the subsequent exponential increase of wireless data traffic, the energy consumption of cellular networks has rapidly caught the ...

[Get Price](#)



## LLVD & BLVD in Base Station Power Cabinets

LLVD and BLVD Protection in Base Station Power Cabinets Introduction In modern communication networks, base

stations, as core infrastructure, are ...

[Get Price](#)



## 5G Base Station

5G base station is the core equipment of 5G network, which provides wireless coverage and realizes wireless signal transmission between ...

[Get Price](#)



## Telecommunication base station system working principle and ...

When the output mains power is cut off, the rectifier module stops working, and the solar energy cannot supply power normally. The system output load is powered by the battery ...

[Get Price](#)

## Contact Us

For catalog requests, pricing, or partnerships, please visit:  
<https://barkingbubbles.co.za>